

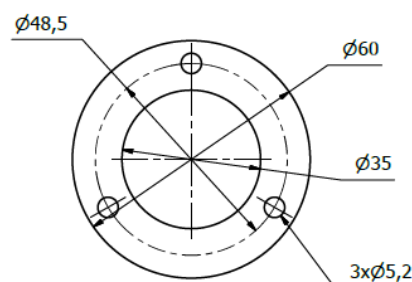
Mounting and Service

1. Unit

- Quartz system with stainless steel flange, possibly with a special foil to prevent the glass from splintering, if broken.
- Power supply for 230V transformer for UV lamp
- UV lamp
- Inside steel bracket (if for tank mounting)
- Safety Switch (if ordered)

2. Mounting and employment

- The mounting of the UV lamp can be done in any direction, but normally the lamp is placed vertically from the top of the tank and down. Optimal placement is between the centre (pipes etc) and the side. Best result is achieved with the placement of two lamps, put opposite from each other.
- Do not place directly next to high pressure hose as it can damage the glass.
- Place so the water intake into the tank, will hose the lamp down, but with a low pressure
- Drill a hole for the Quartz tube and metal bracket. The metal bracket should be mounted from inside and the Quartz tube from the outside.
- Metal bracket should be adjusted in length, to support the Quartz tube in the bottom with a light touch.
- Check that the cable screw on top of the transparent cap is tightened.
- Avoid touching the glass and the lamp with bare hands, as it will stain. Clean the glass with alcohol based cleaning fluids if stained.
- Quartz tubes with and without foil, will tolerate up to 10 bars pressure and should not be cleaned with a high-pressure hose or similar.
- The mounting of the UV lamp, should be done by trained staff and always with a safety switch on the hatch.



3. Use of the UV Unit

After the mounting and connection to power, can the function of the lamp be controlled through the transparent cap as a soft blue light.



NOTE:
UVC light is dangerous for both eyes and skin. Shortterm exposure with UVC light can give severe burns on skin and eyes.

Do not turn on the lamp, before the installation is complete and the lamp is securely out of sight.



4. Errors

If the disinfection is unsatisfactory, please check the following points:

Possible cause

Quartz tube is dirty

Solving the problem

Clean it (avoid anything that will scratch the surface, alcohol based agent is well suited for removal of stains etc)

Life time expired	Change the lamp. The lamp has a guaranteed life time of 10.000 hours, after that time it can still look okay, but disinfection will be insufficient.
The unit will not turn on, after change of bulb (or disconnection)	Check the power supply to the unit and try to employ from another source. Check the transformer in the grey box and look for brown colouring on the white item. Any kind of overvoltage, will cause the transformer to melt.
Power plug has gone rusty	When moisture comes into the bulb, the power plug will go rusty and compromise the function. Make sure to tighten the screw on top of transparent cap. Change the parts that need changing and try again.

5. Cleaning and Maintenance

Any dirt on the quartz tube must be removed at once or at least checked for dirt minimum once per year.

Method: Turn of the lamp and demount the unit. Use clean gloves if you touch the quartz tube and finish off with alcohol based detergent.

All kinds of detergents with low pH can be used. Do not anything that will scratch or grind the surface.

6. Change of bulb

The bulb should be changed every 10.000 hours.

Turn of the unit.

The bulb change can be done without dismantling the unit. Loosen the screw on the transparent cap, pull back in the cap and pull out the bulb.

Please take care, that the bulb can be warm!

Pull the plug of the bulb and replace with new bulb in the same way as the old one. Avoid touching the bulb with bare hands.

7. Warranty for UV low-pressure lamps

The following warranty is given on the supplied UV low pressure lamps:

The basis for an assessment of a replacement is the assessment of the lamp at the supplier. This means that all claims must be submitted by prior written agreement.

The total warranty period can last 2 years from the date of delivery.

- Up to 1,000 hours of consumption, the lamp is replaced completely
- Up to 10,000 hours follow a replacement equivalent to the burn time

If nothing else is specified, the number of power on / off is set to 3 times per. day.

The burn time and start-up can be tested using suitable methods. The use of the lamp must be done by using the supplied voltage transmitter or one of the voltage sensors tested and approved by the supplier.

Glass fracture is not replaced.

If no separate agreements have been made, these conditions apply.

CE **IP 54**

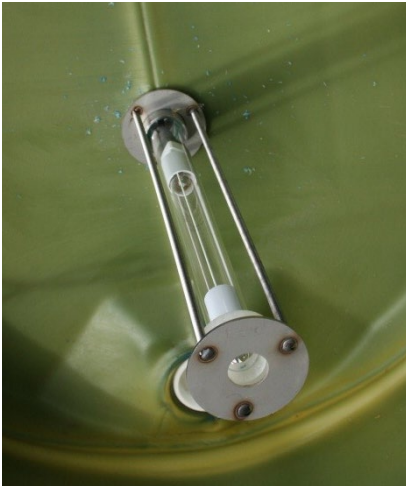
Metal bracket for feed tanks etc

When the UV unit is mounted in mixing tanks etc. It must be mounted with an extra metal bracket to avoid the quartz tube falling into the tank, in case of breakage.

The bracket is made in stainless steel and is acid proof.

The bracket must be mounted from the inside of the tank and the quartz glass inserted from the outside of the tank.

Optimal placement of the lamps is halfway between centre and side of the tank. Try to avoid the worst shadows and use two lamps opposite each other for optimal effect.



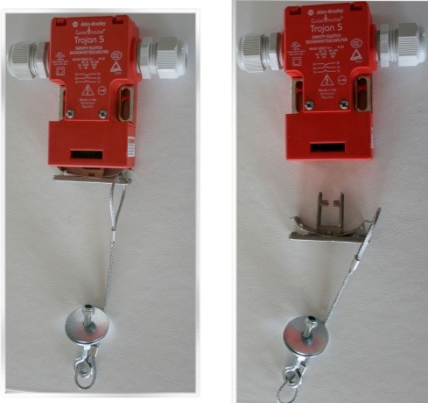
UV UNIT SEEN FROM BELOW – INSIDE TANK.



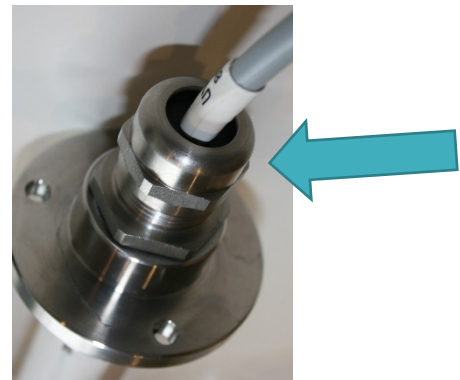
Beskyt øjne & hud mod uv-lys.
Protect eyes & skin against
uv-light.



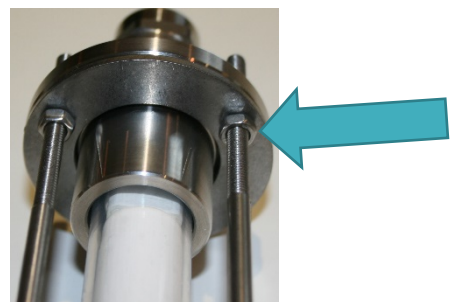
UNIT SEEN FROM ABOVE.



UNIT CAN BE MOUNTED ON A SWITCH, THAT WILL
MAKE SURE ALL POWER TO THE TANK IS
DISCONNECTED BEFORE OPENING



REMEMBER TO TIGHTEN THE SCREW



ADJUST THE TOP PLATE IN ORDER TO SECURE THE
QUARTZ TUBE IN A FIXED POSITION – TO NOT TIGHTEN
HARD.